

---

# European leader in B2B Carsharing

---



# Mobility Tech Green

Our core business? Carsharing.

Ever since its creation in May 2009, Mobility Tech Green has always offered **innovating technological tools** for companies and communities with the aim of helping them to achieve a better management of their vehicle fleets.

While more and more citizens chose to use on-demand vehicles rather than owning one, carsharing slowly becomes a standard. As part of a professional fleet, carsharing can improve employees' daily mobility while making the management of the fleet vehicles easier and less expensive.

Our e-Colibri™ carsharing solution is designed to assist fleet managers in their daily tasks.

In some figures...

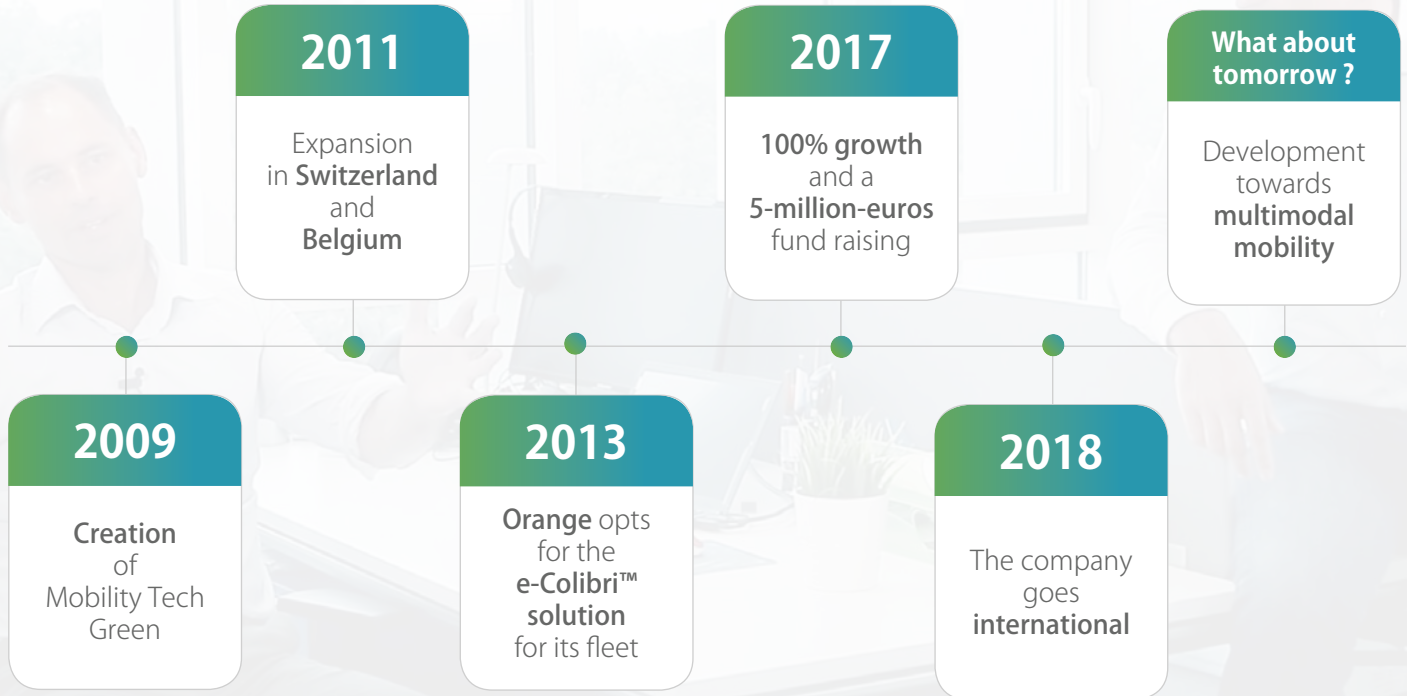


## Customers' profiles



■ VSB ■ Communities ■ Key accounts  
Medium-sized companies

## Mobility Tech Green in a few dates



# e-Colibri™ box on-board kit

Your self-service shared vehicles



e-Colibri™ is a savoir-faire in the on-board technologies field. We introduce you below the different elements that will connect your vehicles to your management platform.



## On-board computer

It connects the vehicle to our information system and enables the collection of the use data.



## RFID & NFC badge reader

It reads professional users' cards to unlock the vehicle.



## Connected keybox

It contains the keys of your vehicles and your fuel cards. It can also detect their presence.



## End-way button

It enables to end an ongoing reservation and then free the vehicle for other users.

# ODE

## on-board computer

Our 100% proprietary hardware

In order to offer you the best carsharing service possible, Mobility Tech Green has internally developed its own on-board calculator, ODE. A complete knowledge of the software and of the equipment guarantees an optimal user experience.



### Our own hardware

Mobility Tech Green masters all of the software and physical layers of the hardware.



### 4G network compatibility

ODE communicates in 4G in order to guarantee an optimal responsiveness of the vehicle.



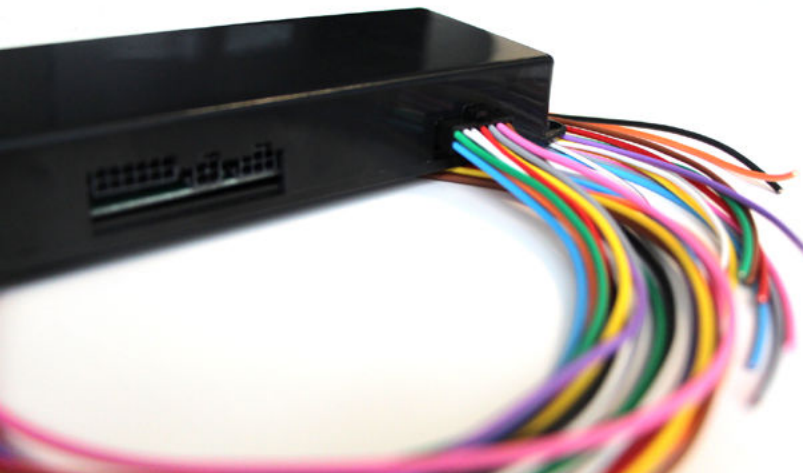
### Compatible with most vehicles

Thermic or electric, modern or not, ODE can be installed on a large range of models.



### Bluetooth connection

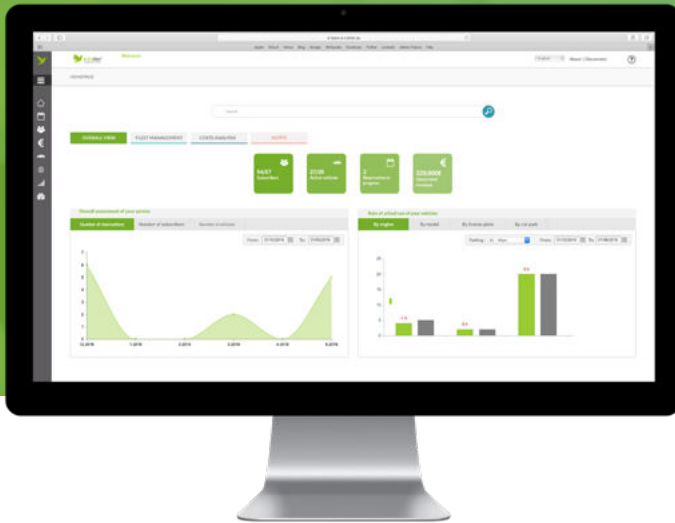
The vehicle uses the Bluetooth to communicate with the information system, even without network.



# e-Colibri™ management back office

Drive your fleet on a daily basis

As the result of more than 10 years of expertise, our e-Colibri™ fleet management tool enables you to manage your carsharing vehicles, from the validation of the vehicles to the export of statistic data. This platform will become your daily working tool in order to have a better understanding of your fleet's activity and to adapt it to the real needs of your co-workers.



## Real-time alerts system

On the dashboard of your platform, you can have access to every alert pertaining to your fleet's activity: subscriptions to handle, batteries alerts, new messages... **A genuine decision support tool.**



**Subscribers**  
management



**Vehicles**  
management



**Reservations**  
management



**Invoicing**  
management



**Maintenances**  
management

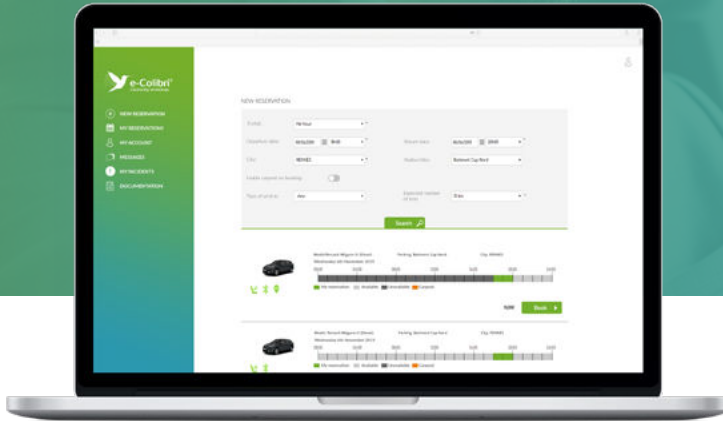


**Statistics**  
module



# e-Colibri™ reservation front office

Maximise the use of your vehicles



The **reservation front office** enables your users to book a self-service vehicle in only a few clicks. They just need to indicate their departure and returning times as well as their reference parking to view the schedules of the available vehicles. In case something unexpected happens, they can also cancel or extend their reservation from that platform.



New  
**reservation**



**Reservations**  
management



**Carpooling**  
module



**Messaging**  
service



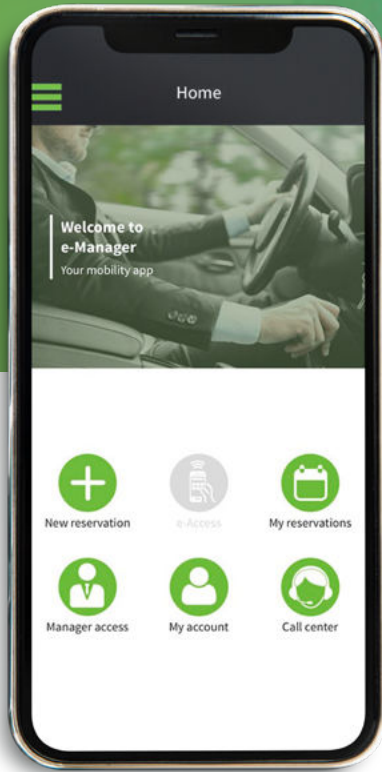
Pro/perso  
**payment platform**



**Multimodal**  
platform

# e-Manager™ mobile application

Your mobility assistant



The **e-Manager™ application** is your employees' new mobility assistant! Designed as the mobile addition to the front office, it enables them to create and manage their vehicle reservations, even when they are away on business trips, and even more!



New  
**reservation**



**Ongoing reservations**  
management



**Locking and**  
**unlocking of**  
the vehicle



**Check-ins**  
and **check-outs**



**Eco-driving**  
mode



**Push notifications**  
system



Available on  
iOS



Available on  
Android



# User's journey

A shared and connected mobility, as simple as it can be



The user logs in to the **e-Colibri™ platform** from a computer or a mobile phone to book a vehicle.

Reminder **text message and email** received on the day of the reservation.



Once in front of the booked vehicle, the subscriber can **swipe his card on the reader or use the application** to unlock it.



Once the subscriber has reached the destination, **the vehicle can be locked with the badge or application, but not with the keys.**

Something unexpected happened?  
The subscriber can **extend the reservation.**



The subscriber needs to **take the vehicle back to its departure site**. If the offer includes the inter-sites option, the user can take the vehicle back on a different parking.



Once the vehicle is parked and the key removed, the subscriber needs to **put the keys back in the connected keybox and push the end of reservation button.**



Thanks to this button, the subscriber can **free the vehicle more quickly.**

The subscriber **locks the vehicle using his card or the application**. He can be asked to perform a **check-out control** of the vehicle.

# Spotlights on multimodality

A flexible offer for all types of travel

Mobility Tech Green has imagined a **multimodal and flexible mobility offer** to answer companies' individual and collective challenges! The regulatory framework of the use of vehicles in urban areas has been radically evolving for the past few years. Companies, with their fleets representing a wide part of the vehicles in circulation, have an essential role to play in these dynamics of change. This can start with a more diversified and more sustainable mobility offer. **Additional transport services help to always be able to offer the right vehicle, whenever and wherever you need it.**

- ✓ Maximise your vehicle fleet.
- ✓ Answer the mobility needs of your staff.
- ✓ Introduce more sustainable mobilities.
- ✓ Adapt to new traffic regulations.



## Carsharing

A more and more widely introduced mobility service in professional fleets, **carsharing** enables employees to **book a self-service vehicle** depending on their needs. Carsharing is the perfect way to travel to meetings outside of the company and can also be available on nights and weekends. A way to offer a convenient service to employees while maximising the use of the fleet!

## Carpooling

**Corporate carpooling** can be done in different ways. For professional travels, like for joint meetings for example. But the most famous way for employees to use it remains the **home-work carpooling travels**.

A mobility which **induces less expenses** and **reinforces the social bound**.

## Bikesharing and micro-mobility

For smaller distances, there is nothing better than bicycles! **Bikesharing** can turn out to be particularly convenient for inter-sites travels or to go to a meeting downtown (and avoid parking issues). We can also ride our bikes at lunch break.

An alternative is the **electric scooter**, that can also be introduced in your fleet. Perfect for urban travels!



# Carsharing advantages

Discover the various impacts of this **shared mobility** on your fleet



## Savings on your mobility budget

- Decrease by 30% of the size of your vehicle fleet
- 25% savings on your mobility expenses
- Rationalised travelling costs



## Vehicle fleet management

- Maximisation of the size and typology of your fleet
- Better use of your service vehicles
- Access to different types of vehicles from a single platform



## Quality and environment management

- Reduction of your carbon imprint
- Promotion of eco-driving
- Reinforcement of the reputation of your company with your customers and partners



## An innovative company image

- Corporate social responsibility culture
- Collaborative behaviour
- 2.0 business showcase

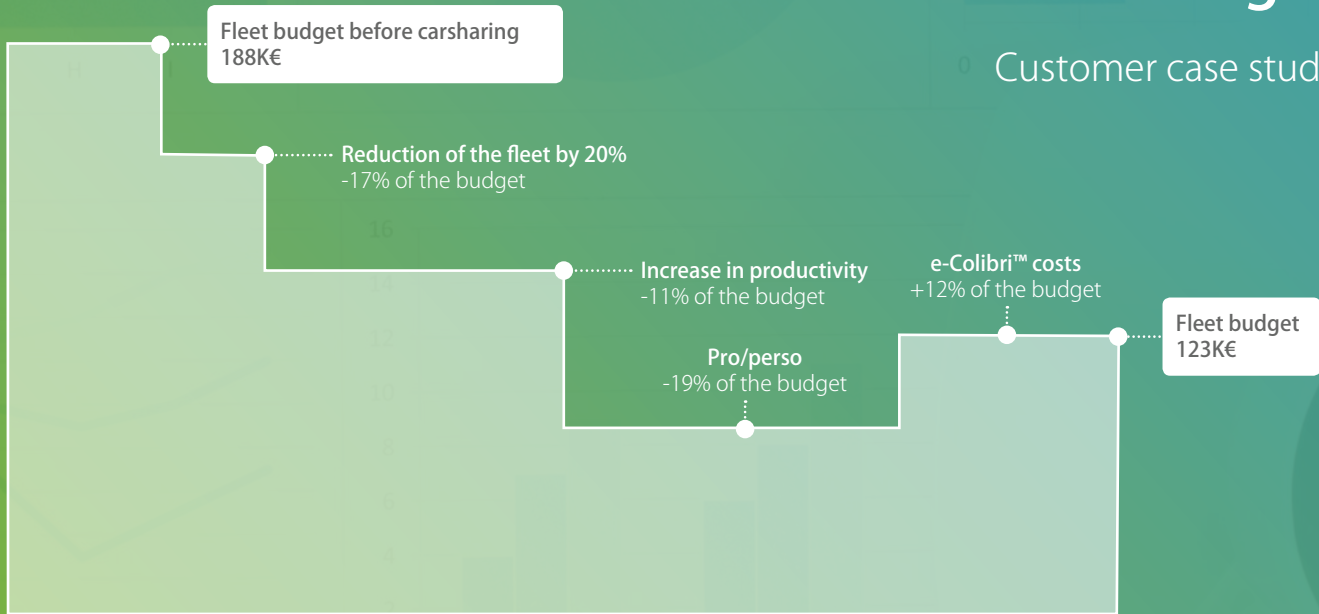


## Time saving

- 24/24, 7/7 Self-service vehicles
- Vehicle reservation from the website or the mobile application
- An easy and pleasant customer experience

# A 35% decrease on the fleet budget

Customer case study



# Mobility Tech Green's onboarding

## A guidance from A to Z

From the definition of your needs to the proposition of a fitted communication plan, discover the onboarding process. **Welcome to the Mobility Tech Green's family!**

### The Carebox™ program

Mobility Tech Green offers its customers a genuine tailored approach of its carsharing service. The Carebox program goes way beyond the simple graphic adaptation, it guides every company or community in the development of its new travelling mode. The purpose is clear: turn our new customers into our partners for tomorrow's shared mobility.



### IT developments

Our IT centre is at your disposal to perform tailored developments.



### Mobility Management

A mobility manager will be dedicated to your project in order to manage the set up of your car sharing system. As a creative force, your mobility manager brings his expertise at the service of the good follow-up of your carsharing service.



### Communication assistance

Our communication service assists you before and after the launch of your car service for its internal promotion.



### Collective or individual training

Our support centre assists you in the training of the e-Colibri™ system. You can benefit from various types of training depending on your needs: webinars, on site or remotely.



# Promoting tools for your new mobility service

---



## Flyers

We supply templates of printed documents for the communication to your employees.



## Email marketing campaigns

Service launching and subscription newsletter templates are at your disposal to quickly reach out to your future users.



## User's journey video

An explanatory video introducing the booking process of a carsharing vehicle is sent to you in order to simplify the integration of the service.



## Text message campaigns

Text message campaigns can be particularly useful to communicate on the launch of your service or on the training sessions.



## Satisfaction surveys

Satisfaction surveys can be implemented on a regular basis to collect user evaluations and adjust your service.



## Vehicle branding

Thanks to that option, you can go further in the customisation of your vehicles for a better visibility of your new carsharing service.

## A team at your service

---

Mobility Tech Green puts at your disposal the knowledge and the counselling force of a team covering every field of expertise of professional mobility.

**Technical department** Specific developments

---

**Commercial department** Daily assistance

---

**Marketing & communication** Promotion tools for your service

---

**Head of operations** Deployment and installation of your vehicles

---

**Support department** Training and phone assistance

# Mobility Tech Green's offers

## Three offers for your mobility

In addition to its signature option, **e-Colibri™ Success**, Mobility Tech Green has a range of offers to always guarantee the perfect solution to answer your mobility challenges.

You wish to try carsharing before launching into it?  
**Discovery offer starting at 250€ excluding tax/month**



As part of our discovery offer, you have at your disposal one or more vehicles equipped with our e-Colibri™ solution for a period of 1 to 3 months starting from 250 euros excluding tax/month per vehicle, with an access to the management and reservation platforms.

**BEST SELLER**



## e-Colibri™ Success

The best of B2B carsharing,  
**tailored to your image**

e-Colibri™ box **on-board kit**

### Personalised software platforms

Back office  
Front office  
e-Manager™ mobile application

**Specific developments** possible to  
guarantee a **tailored service.**



## e-Colibri™ Essentials

The **packaged** B2B  
carsharing offer

e-Colibri™ box **on-board kit**

### Standardised software platforms

Back office  
Front office  
e-Manager™ mobile application

A quickly set-up **packaged offer**.



## Mobilycar

The turnkey  
carsharing offer

**Vehicle equipped** with the e-Colibri™ box kit

### Standardised software platforms

Back office  
Front office  
e-Manager™ mobile application

An **offer including a long-term rental vehicle** for  
VSB and medium-sized companies.

# References

Our customers are our best ambassadors



“ We have been working with Mobility Tech Green since 2013 in order to experiment carsharing with our co-workers. This partnership is very successful. Today, more than **3,000 vehicles of our fleet** are used in carsharing. The users like how simple it is to book a vehicle. Thanks to e-Colibri™ we can also **offer the use of the vehicles on nights and weekends**, as well as **carpooling**. ”

Jean Zermati, Orange



## Rewards highlighting Mobility Tech Green's expertise



CES Innovation Awards 2020

Vehicle intelligence & transportation



Technology Innovator Awards 2019

Corporate Mobility Innovation Award



Trophées L'Automobile & L'Entreprise 2018

1st prize  
Service of the year



Label FrenchWeb 500 Year 2019

184th place in the rankings

# Frequently Asked Questions

Know everything about our solutions

---

**What are the advantages of the carsharing system compared to a numeric key box?**

From a logistic point of view, the carsharing service helps to **secure** even more the access to the vehicle's keys while keeping them in a connected key box inside the vehicle. Users do not need to make a detour before and after their reservation: they can go directly to the booked vehicle with their card or smartphone in hand.

---

**Can vehicles be booked on nights and weekends?**

Thanks to carsharing, and more particularly the **professional/personal option**, you can open the vehicles to reservation outside of the working hours. A perfect way to guarantee the return on investment of the service, maximise the use of your vehicles while offering this advantage to your employees!

---

**Do I need to change the vehicles of my fleet to benefit from the carsharing service?**

Our on-board e-Colibri™ kit can be installed on a wide majority of vehicles: no need to renew your fleet to launch into it! Nevertheless, with our **Mobilycar offer** you can benefit, if needed, from a package including the vehicle already equipped with our on-board technology, and an access to the management and reservation platforms.

## Help Centres

---

Mobility Tech Green puts at the disposal of fleet managers an online help platform as well as a help centre for final users to guide them in the use of our mobility solutions.

They can find:

- a presentation of **the functionalities**
- all of the **webinars' replays**
- video **tutorials**
- **documentation**
- a **mutual assistance forum**


# Contact us

Our team is at **your disposal** for your mobility projects

 [www.mobilitytechgreen.com](http://www.mobilitytechgreen.com)

 (+33)2 23 27 52 52

 [communication@mobilitytechgreen.com](mailto:communication@mobilitytechgreen.com)

 **Our headquarters in Rennes**  
3 rue René Dumont  
Bâtiment Energis II - Porte A  
35700 Rennes - France

**Our office in Paris**  
Kwerk - Tour First  
1-2 Place des Saisons  
92400 Courbevoie - France

 [/company/mobility-tech-green](https://www.linkedin.com/company/mobility-tech-green)

 [@mobitechgreen](https://twitter.com/mobitechgreen)

